



**Reeco**  
ESD Clothing

# TABLE OF CONTENTS

ABOUT REECO	3
CLOTHING MANUFACTURING	4-5
ANTISTATIC PROTECTIVE CLOTHING	6
ANTISTATIC FABRICS	7
SHORT SLEEVE T-SHIRT	8-9
LONG SLEEVE T-SHIRT	10-11
SHORT SLEEVE POLO SHIRT	12-13
LONG SLEEVE POLO SHIRT	14-15
PIQUE TYPE SHORT SLEEVE POLO SHIRT	16-17
PIQUE TYPE LONG SLEEVE POLO SHIRT	18-19
CLASSIC SWEATSHIRT	20-21
ZIP UP SWEATSHIRT	22-23
STANDARD COAT	24-25
SHORT SLEEVE SHIRT	26-27
CASAQUE TYPE COAT	28-29
LADIES TROUSERS	30-31
MEN'S TROUSERS	32-33
CLEANROOM STANDARD COAT	34-35
CLEANROOM COAT WITH INTEGRATED HOOD	36-37
CLEANROOM COVERALL	38-39
WASHING INSTRUCTION	40





# ABOUT REECO

## 28 YEARS OF EXPERIENCE

Over the years our employees had turned into the top class professionals. Numerous training courses allowed us to implement the most modern solutions, patterns and designs of our products.

We were also able to achieve it because of our efficiency and staff engagement.

## 5 BRANCHES IN EUROPE

We provide innovative customer relationship management solutions.

All of our branches across Europe are equipped with Demo Room, where we can prove the effectiveness of our products.

## 1600 m<sup>2</sup> WAREHOUSE AREA

Our logistic and warehouse personnel is always equipped with sufficient knowledge about the status and realization stage of each order. Our warehouse staff enables us to deliver orders promptly and directly to you.

99% of the products are standard stock-items

## PRIZES AND AWARDS

Since the very beginning we make tremendous effort to make sure, that our customers and REECO users are able to make use of our products for extensive period of time.

Our brand's quality got proven by numerous awards.

For example the **FIRST PLACE** in „GREAT DESIGN 2015“ competition.

Moreover, we were given a credit of satisfaction from our customers - such appreciation is the best award.

## FAIRS AND CONFERENCES

We are advertising and promoting our products during various domestic and foreign conferences and fairs. You can meet us at Automaticon, Productronica, Motek and TIB.

Wherever we meet, our employees will be happy to support you including presentation and detailed discussion.





# CLOTHING MANUFACTURING

---

We know how important is the user comfort and safety working with components and devices sensitive to electrostatic discharge, therefore we constantly take care of maintaining high standards during the clothing manufacturing.

Clothing presented in our catalog meets the requirements of following norms:

**PN-EN 1149-5 | PN-EN ISO 13688 | PN-EN 61340-5-1**

Reeco antistatic protective clothing is produced in Poland under appropriate work conditions, compliance with the most stringent standards of the production process.

We constantly control the antistatic properties of our fabrics and accessories used for the production.

The result is a constant end product quality, verified at the stage of preparation, sewing and packing and very high repeatability of the shape of clothing.

In addition, we can guarantee, that Reeco protective antistatic clothing washed at the appropriate conditions do not lose its properties, becoming significantly reducing threat affecting on the quality of Your production or service.

## **CLEANROOM GARMENT**

We make sure that Clean Room Reeco clothing also meets the appropriate requirements. Clean Room quality certificate issued by the European Textile Laboratory, confirms adequacy of clothing sewn from polyester fabric, to the ISO 5-9 class Cleanrooms.

## **PERSONALIZED CLOTHING**

We offer personalization of Reeco antistatic protective clothing with possibility of embroidery or printing among others your company logo, name and surname of the employee with the job title as well as custom colors of our fabrics.

# ANTISTATIC PROTECTIVE CLOTHING

According to international researches about 70% of damages of electronic components are caused by inappropriate personnel protection.

Human is primary charges generator.

Therefore, the main method of protection against electrostatic discharges becomes antistatic clothing. Very widespread mistake is belief about efficient ESD protection by using just wrist strap.

While all international standards, including EN 61340-5-1, stresses necessity of using special clothing directly at workplace and in all EPA zones.



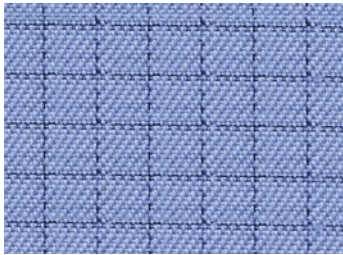
USE OF ANTISTATIC CLOTHING IS ONE OF  
MOST EFFECTIVE METHODS OF PROTECTION  
AGAINST ELECTROSTATIC DISCHARGES



# ANTISTATIC FABRICS

All of the fabrics that we use have been tested for their applicable antistatic standards by Textile Research Institute. We provide several types of fabrics different due to the structure, composition and color. All of the fabrics are characterized by high durability and color stability.

FABRIC 065



**COMPOSITION:**

Cotton	34,8 %
Polyester	64,3 %
Carbon fiber	0,9 %

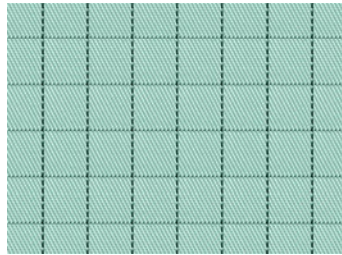
**STRUCTURE:**

5 x 5 mm grid

**WEIGHT:**

160 g/m<sup>2</sup>

FABRIC 099



**COMPOSITION:**

Polyester	99 %
Carbon fiber	1 %

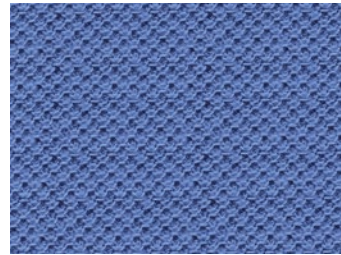
**STRUCTURE:**

5 x 5 mm grid

**WEIGHT:**

110 g/m<sup>2</sup>

PIQUE KNIT FABRIC



**COMPOSITION:**

Cotton	99 %
Carbon fiber	1 %

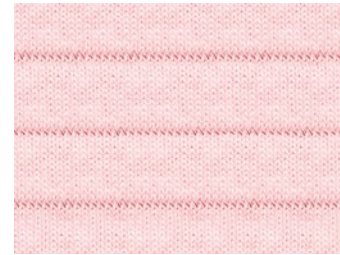
**STRUCTURE:**

Pique knitted fabric

**WEIGHT:**

160 g/m<sup>2</sup>

KNIT FABRIC 050



**COMPOSITION:**

Cotton	49,5 %
Polyester	49,5 %
Carbon fiber	1 %

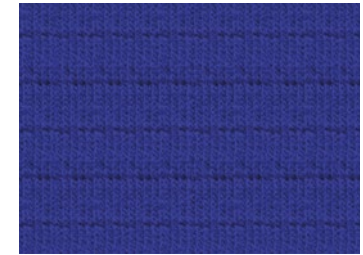
**STRUCTURE:**

Jersey knitted fabric

**WEIGHT:**

180 g/m<sup>2</sup>

KNIT FABRIC 260



**COMPOSITION:**

Cotton	49,5 %
Polyester	49,5 %
Carbon fiber	1 %

**STRUCTURE:**

Jersey knitted fabric

**WEIGHT:**

260 g/m<sup>2</sup>

## COLOR MATCHING

We did our best to present printed colors as similar as possible to the actual colors, however we would like to inform that printed and electronic colors do not give a fully accurate representation of the actual colors of the clothing.

49,5 %

COTTON

49,5 %

POLYESTER

1 %

CARBON  
FIBER

Product Code:  
CE-TSHIRT.050



RESISTANCE IN ACCORDANCE  
WITH STANDARD

PN-EN 61340-5-1



WEIGHT

180 g/m<sup>2</sup>





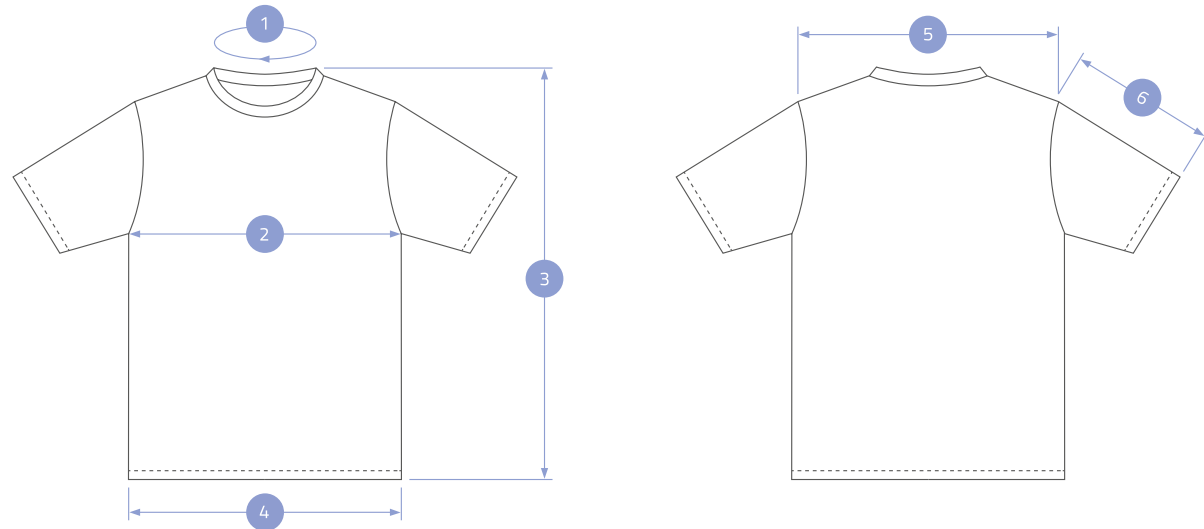
# SHORT SLEEVE T-SHIRT

## DESCRIPTION

Fabric	KNIT FABRIC 050
Cut	FEMALE / MALE
Sizes	2XS - 2XL
ESD sign	SIDE TAG

## OPTIONS

Custom size	BESPOKE
Custom colour	BESPOKE
Customer's logo	EMBROIDERY / OVERPRINT



## STANDARD COLORS | KNIT FABRIC 050



Navy Blue	Black	White	Blue	Pink	Orange	Red
25	27	28	30	31	38	39

	2XS	XS	S	M	L	XL	2XL
BODY							
1	40	41	41	43	45	48	49
2	46	49	52	55	58	61	64
3	66	67	68	68	70	70	72
4	46	49	52	55	58	61	64
5	47	48	49	50	51	52	53
SLEEVES							
6	22	22	22	23	23	24	25

Dimensions in centimeters

49,5 %

COTTON

49,5 %

POLYESTER

1 %

CARBON  
FIBER

Product Code:  
CE-TSHIRT.050-LS



RESISTANCE IN ACCORDANCE  
WITH STANDARD

**PN-EN 61340-5-1**



WEIGHT

**180 g/m<sup>2</sup>**



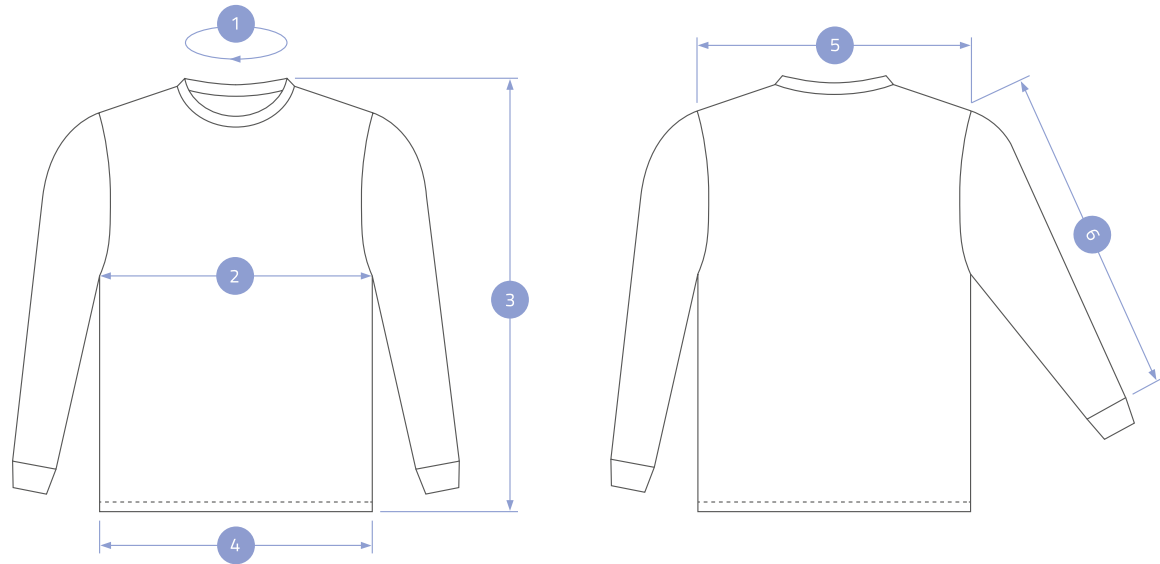
# LONG SLEEVE T-SHIRT

## DESCRIPTION

Fabric	KNIT FABRIC 050
Cut	FEMALE / MALE
Sizes	2XS - 2XL
Sleeves	RIB CUFF
ESD sign	SIDE TAG

## OPTIONS

Custom size	BESPOKE
Custom colour	BESPOKE
Customer's logo	EMBROIDERY / OVERPRINT



## STANDARD COLORS | KNIT FABRIC 050



Navy Blue	Black	White	Blue	Pink	Orange	Red
25	27	28	30	31	38	39

	2XS	XS	S	M	L	XL	2XL
BODY							
1	40	41	41	43	45	48	49
2	46	49	52	55	58	61	64
3	66	67	68	68	70	70	72
4	46	49	52	55	58	61	64
5	47	48	49	50	51	52	53
SLEEVES							
6	58	58	60	60	62	62	64

Dimensions in centimeters

49,5 %

COTTON

49,5 %

POLYESTER

1 %

CARBON  
FIBER

Product Code:  
CE-POLO.050



RESISTANCE IN ACCORDANCE  
WITH STANDARD

**PN-EN 61340-5-1**



WEIGHT

**180 g/m<sup>2</sup>**



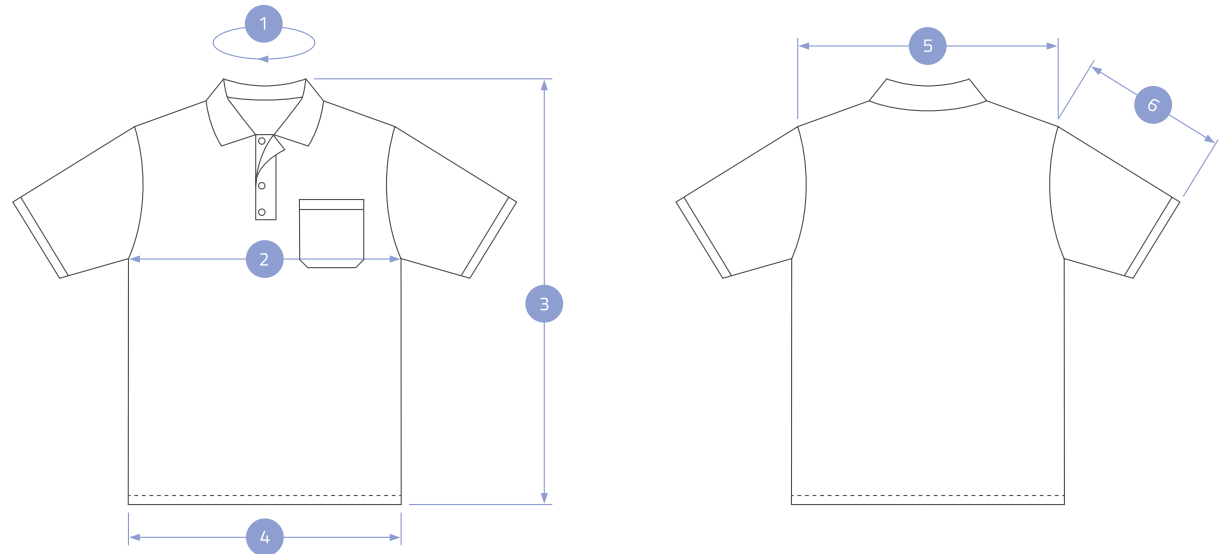
# SHORT SLEEVE POLO SHIRT

## DESCRIPTION

Fabric	KNIT FABRIC 050
Cut	FEMALE / MALE
Sizes	2XS - 2XL
Fastener	THREE BUTTONS
Pocket	ONE ON THE LEFT BREAST
ESD sign	ON THE POCKET

## OPTIONS

Custom size	BESPOKE
Custom colour	BESPOKE
Customer's logo	EMBROIDERY / OVERPRINT
ESD sign	SIDE TAG



## STANDARD COLORS | KNIT FABRIC 050



Navy Blue	Black	White	Blue	Pink	Orange	Red
25	27	28	30	31	38	39

	2XS	XS	S	M	L	XL	2XL
BODY							
1	38	38	38	40	40	42	42
2	47	50	54	58	62	66	70
3	68	68	70	71	73	74	74
4	47	50	54	58	62	66	70
5	45	46	48	50	52	54	55
SLEEVES							
6	24	24	24	26	26	27	27

Dimensions in centimeters

49,5 %

COTTON

49,5 %

POLYESTER

1 %

CARBON  
FIBER

Product Code:  
CE-POLO.050-LS



RESISTANCE IN ACCORDANCE  
WITH STANDARD

PN-EN 61340-5-1



WEIGHT

180 g/m<sup>2</sup>



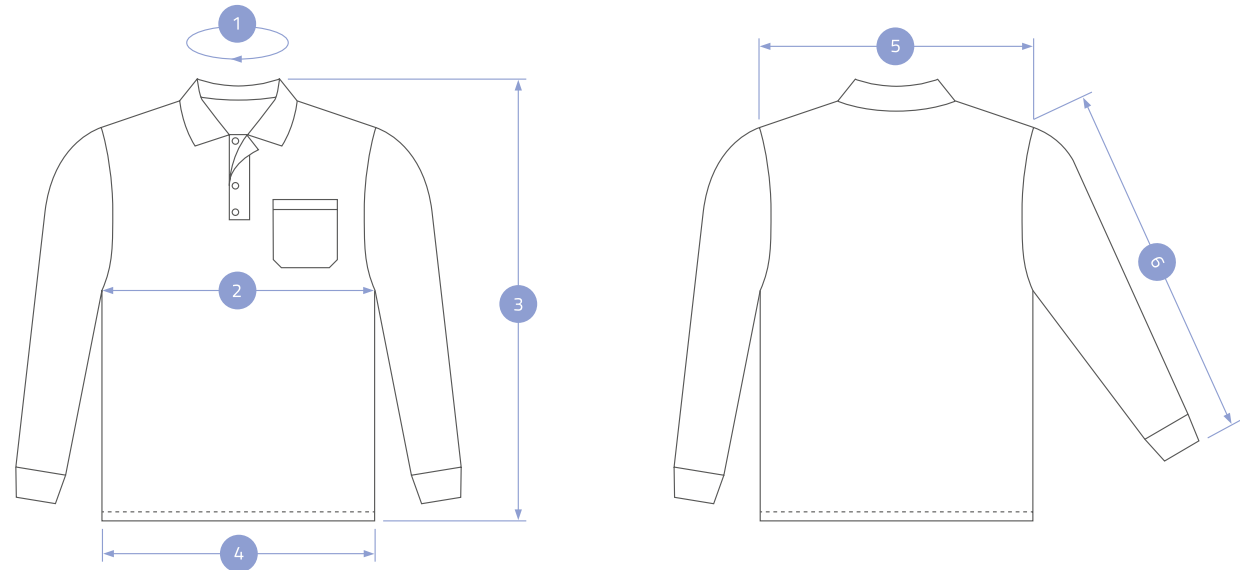
# LONG SLEEVE POLO SHIRT

## DESCRIPTION

Fabric	KNIT FABRIC 050
Cut	FEMALE / MALE
Sizes	2XS - 2XL
Fastener	THREE BUTTONS
Pocket	ONE ON THE LEFT BREAST
Sleeves	RIB CUFF
ESD sign	ON THE POCKET

## OPTIONS

Custom size	BESPOKE
Custom colour	BESPOKE
Customer's logo	EMBROIDERY / OVERPRINT
ESD sign	SIDE TAG



## STANDARD COLORS | KNIT FABRIC 050



Navy Blue	Black	White	Blue	Pink	Orange	Red
25	27	28	30	31	38	39

	2XS	XS	S	M	L	XL	2XL
BODY							
1	38	38	38	40	40	42	42
2	47	50	54	58	62	66	70
3	68	68	70	71	73	74	74
4	47	50	54	58	62	66	70
5	45	46	48	50	52	54	55
SLEEVES							
6	58	58	60	60	62	62	64

Dimensions in centimeters

99 %

COTTON

1 %

CARBON  
FIBER

Product Code:  
CE-POLO.PIKA



RESISTANCE IN ACCORDANCE  
WITH STANDARD

PN-EN 61340-5-1



WEIGHT

160 g/m<sup>2</sup>





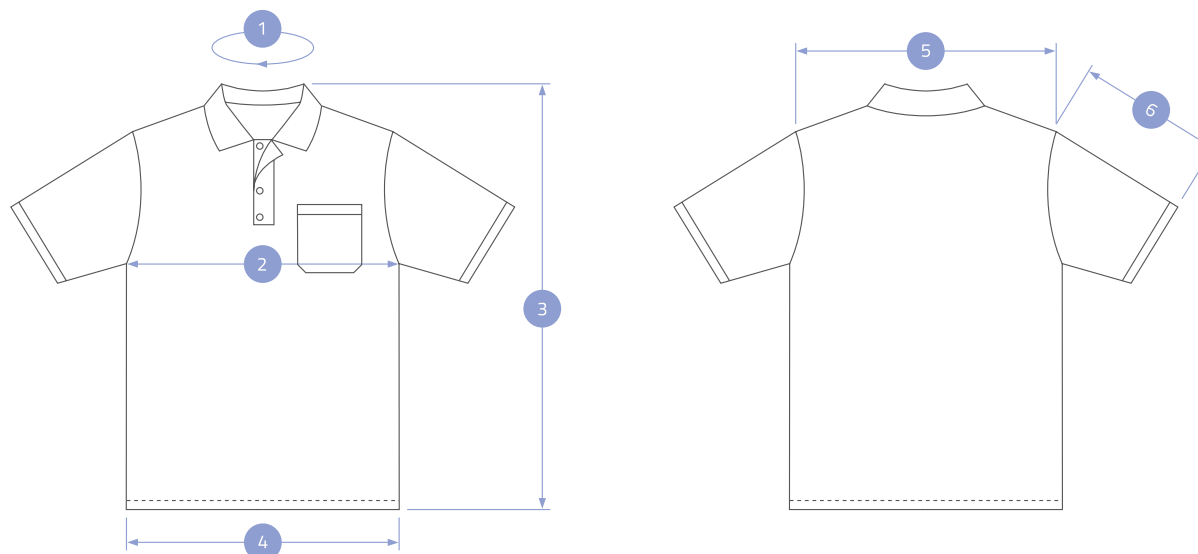
# PIQUE TYPE SHORT SLEEVE POLO SHIRT

## DESCRIPTION

Fabric	KNIT FABRIC PIQUE
Cut	FEMALE / MALE
Sizes	2XS - 2XL
Fastener	THREE BUTTONS
Pocket	ONE ON THE LEFT BREAST
ESD sign	ON THE POCKET

## OPTIONS

Custom size	BESPOKE
Custom colour	BESPOKE
Customer's logo	EMBROIDERY / OVERPRINT
ESD sign	SIDE TAG



## STANDARD COLORS | KNIT FABRIC PIQUE



Blue	Navy Blue	Black	Turquoise
19	20	23	33

	2XS	XS	S	M	L	XL	2XL
BODY							
1	38	38	38	40	40	42	42
2	47	50	54	58	62	66	70
3	68	68	70	71	73	74	74
4	47	50	54	58	62	66	70
5	45	46	48	50	52	54	55
SLEEVES							
6	24	24	24	26	26	27	27

Dimensions in centimeters

99 %

COTTON

1 %

CARBON  
FIBER

Product Code:  
CE-POLO.PIKA-LS



RESISTANCE IN ACCORDANCE  
WITH STANDARD

PN-EN 61340-5-1



WEIGHT

160 g/m<sup>2</sup>



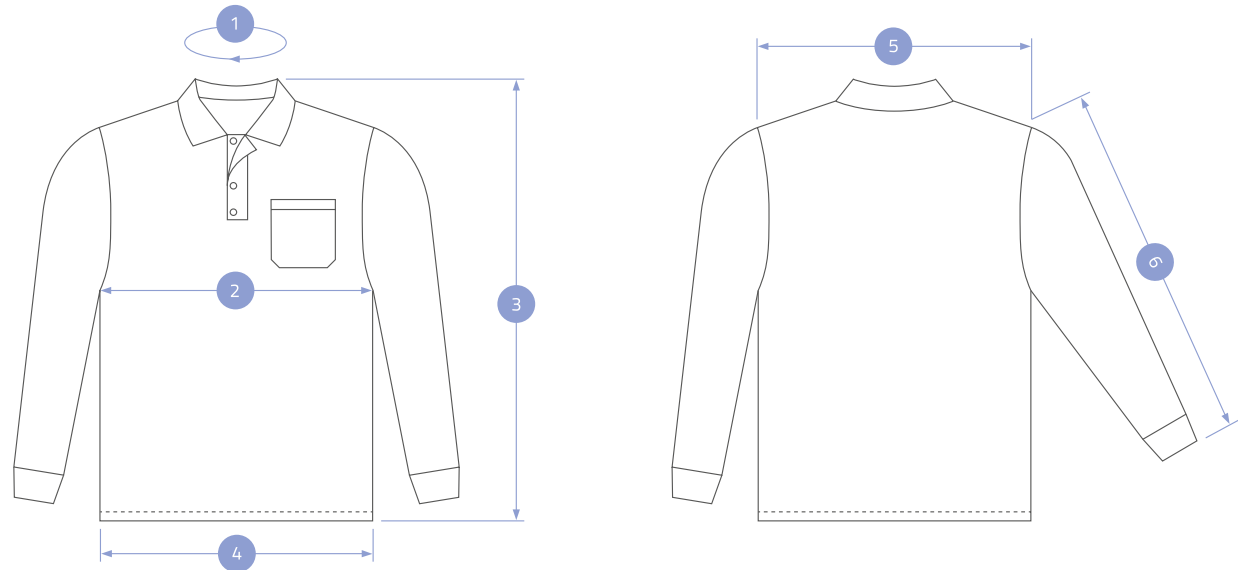
# PIQUE TYPE LONG SLEEVE POLO SHIRT

## DESCRIPTION

Fabric	KNIT FABRIC PIQUE
Cut	FEMALE / MALE
Sizes	2XS - 2XL
Fastener	THREE BUTTONS
Pocket	ONE ON THE LEFT BREAST
Sleeves	RIB CUFF
ESD sign	ON THE POCKET

## OPTIONS

Custom size	BESPOKE
Custom colour	BESPOKE
Customer's logo	EMBROIDERY / OVERPRINT
ESD sign	SIDE TAG



## STANDARD COLORS | KNIT FABRIC PIQUE



Blue	Navy Blue	Black	Turquoise
19	20	23	33

	2XS	XS	S	M	L	XL	2XL
BODY							
1	38	38	38	40	40	42	42
2	47	50	54	58	62	66	70
3	68	68	70	71	73	74	74
4	47	50	54	58	62	66	70
5	45	46	48	50	52	54	55
SLEEVES							
6	58	58	60	60	62	62	64

Dimensions in centimeters

49,5 %

COTTON

49,5 %

POLYESTER

1 %

CARBON  
FIBER

Product Code:  
CE-BLUZA.260-BS



RESISTANCE IN ACCORDANCE  
WITH STANDARD

**PN-EN 61340-5-1**



WEIGHT

**260 g/m<sup>2</sup>**



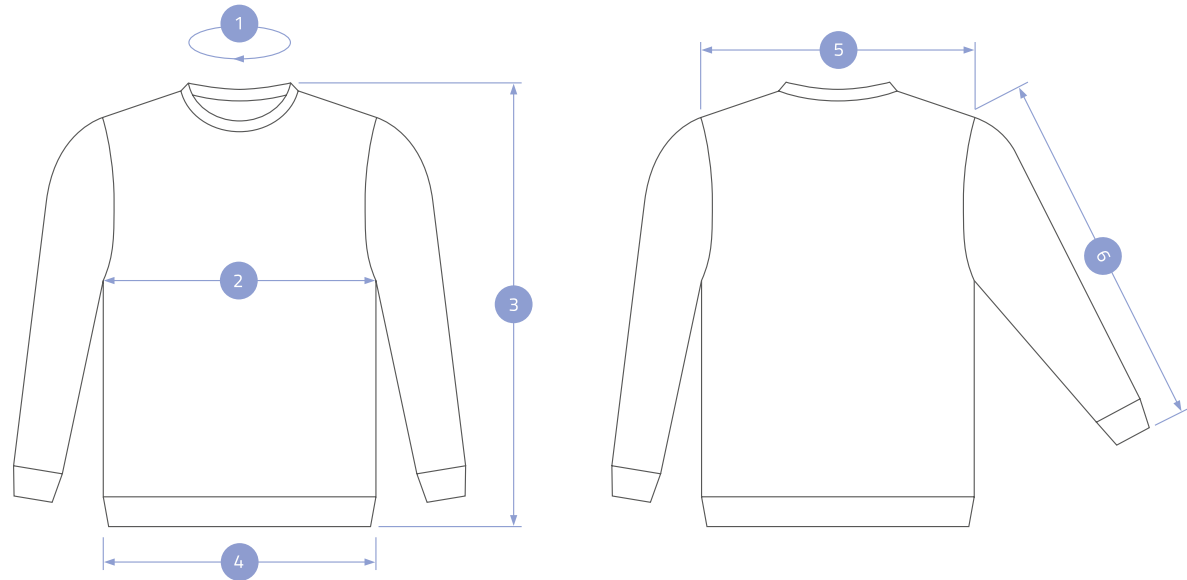
# CLASSIC SWEATSHIRT

## DESCRIPTION

Fabric	KNIT FABRIC 260
Cut	UNISEX
Sizes	2XS - 2XL
Neck	RIB CUFF
Sleeves	RIB CUFF
Bottom	RIB WELT
ESD sign	SIDE TAG

## OPTIONS

Custom size	BESPOKE
Custom colour	BESPOKE
Customer's logo	EMBROIDERY / OVERPRINT



## STANDARD COLORS | KNIT FABRIC 260



Grey	Black	Navy Blue	Blue
13	26	34	35

	2XS	XS	S	M	L	XL	2XL
BODY							
1	40	42	44	46	47	48	49
2	46	50	54	58	62	66	70
3	56	56	59	63	66	69	72
4	44	48	52	56	60	64	68
5	47	48,5	50	51,5	53	54,5	56
SLEEVES							
6	56	57	58	61	63	67	70

Dimensions in centimeters

49,5 %

COTTON

49,5 %

POLYESTER

1 %

CARBON  
FIBER



RESISTANCE IN ACCORDANCE  
WITH STANDARD

**PN-EN 61340-5-1**



WEIGHT

**260 g/m<sup>2</sup>**

Product Code:  
**CE-BLUZA.260-UP**



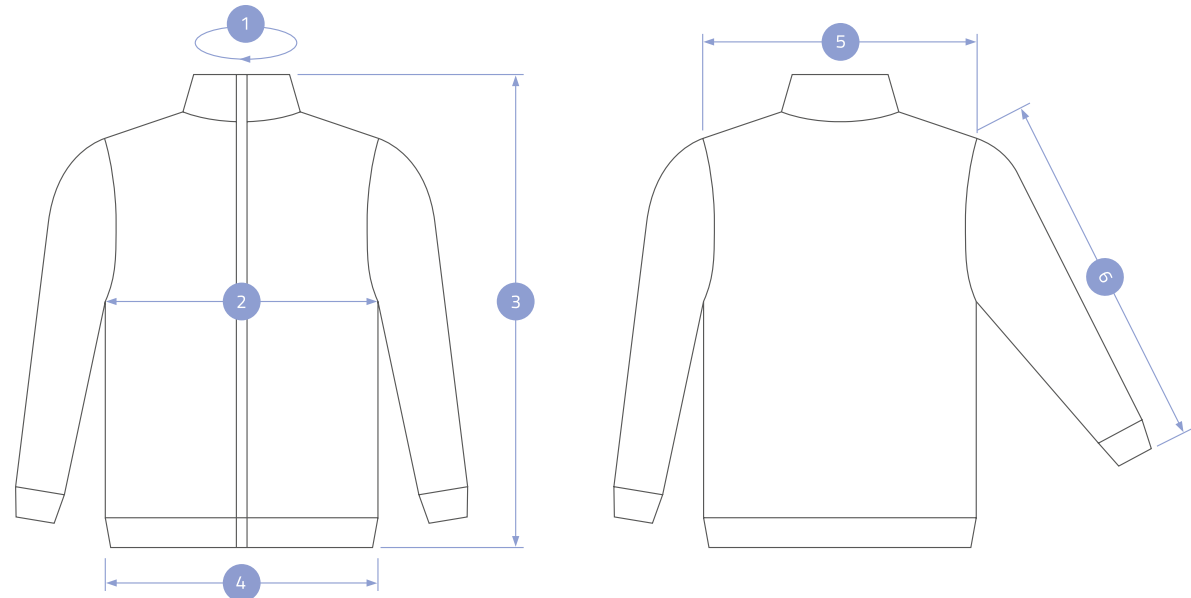
# ZIP UP SWEATSHIRT

## DESCRIPTION

Fabric	KNIT FABRIC 260
Cut	UNISEX
Sizes	2XS - 2XL
Fastener	COVERED ZIPPER
Neck	TURTLE NECK
Sleeves	RIB CUFF
Bottom	RIB WELT
Pockets	ONE ON EACH SIDE
ESD sign	SIDE TAG

## OPTIONS

Custom size	BESPOKE
Custom colour	BESPOKE
Customer's logo	EMBROIDERY / OVERPRINT



## STANDARD COLORS | KNIT FABRIC 260



Grey	Black	Navy Blue	Blue
13	26	34	35

	2XS	XS	S	M	L	XL	2XL
BODY							
1	36	40	40	42	43	45	47
2	52	55	58	61	64	67	70
3	74	76	78	80	82	84	86
4	42	45	48	51	54	57	60
5	45	46	47	48	49	50	51
SLEEVES							
6	66	68	70	74	76	78	80

Dimensions in centimeters

**34,8 %**

COTTON

**64,3 %**

POLYESTER

**0,9 %**

CARBON  
FIBER

Product Code:  
**CE-FARTU.065**



RESISTANCE IN ACCORDANCE  
WITH STANDARD

**PN-EN 61340-5-1**



WEIGHT

**160 g/m<sup>2</sup>**





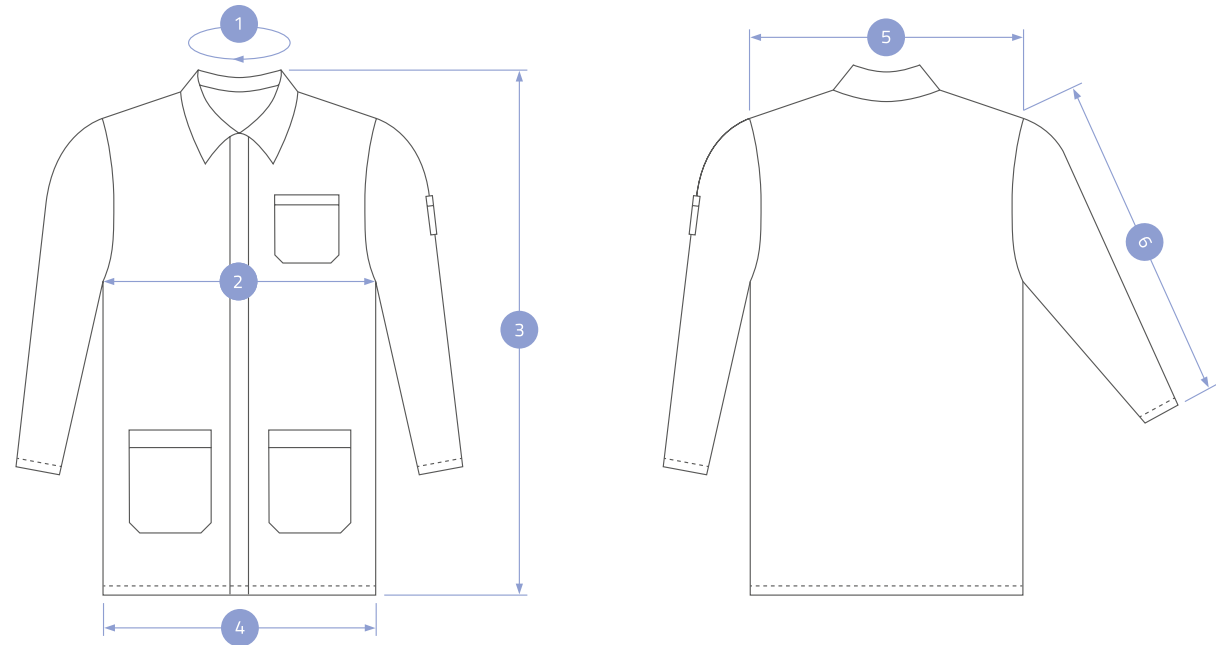
# STANDARD COAT

## DESCRIPTION

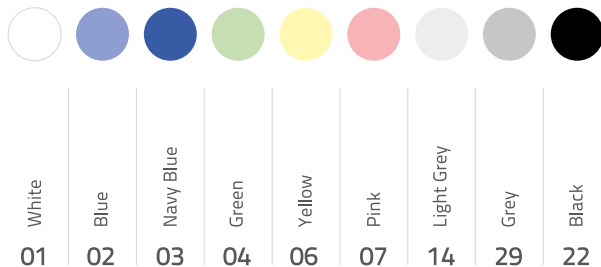
Fabric	FABRIC 065
Cut	FEMALE / MALE
Sizes	2XS - 2XL
Fastener	COVERED METAL SNAPS
Sleeves	FINISHED WITH ADJUSTABLE HEM
Pockets	TWO ON THE BOTTOM ONE ON THE LEFT BREAST ONE ON THE LEFT SLEEVE
ESD sign	ON THE BREAST POCKET

## OPTIONS

Custom size	BESPOKE
Custom colour	BESPOKE
Customer's logo	EMBROIDERY / OVERPRINT



## STANDARD COLORS | FABRIC 065



	2XS	XS	S	M	L	XL	2XL
BODY							
1	45	45,5	46,5	46,5	47,5	47,5	49
2	56	58	60	62	64	66	68
3	80	80	85	90	95	100	105
4	56	58	60	62	64	66	68
5	45	46	47	48	49	50	51
SLEEVES							
6	58	60	62	64	66	68	68

Dimensions in centimeters

34,8 %

COTTON

64,3 %

POLYESTER

0,9 %

CARBON  
FIBER



RESISTANCE IN ACCORDANCE  
WITH STANDARD

**PN-EN 61340-5-1**



WEIGHT

**160 g/m<sup>2</sup>**

Product Code:  
**CE-KOSZU.065**



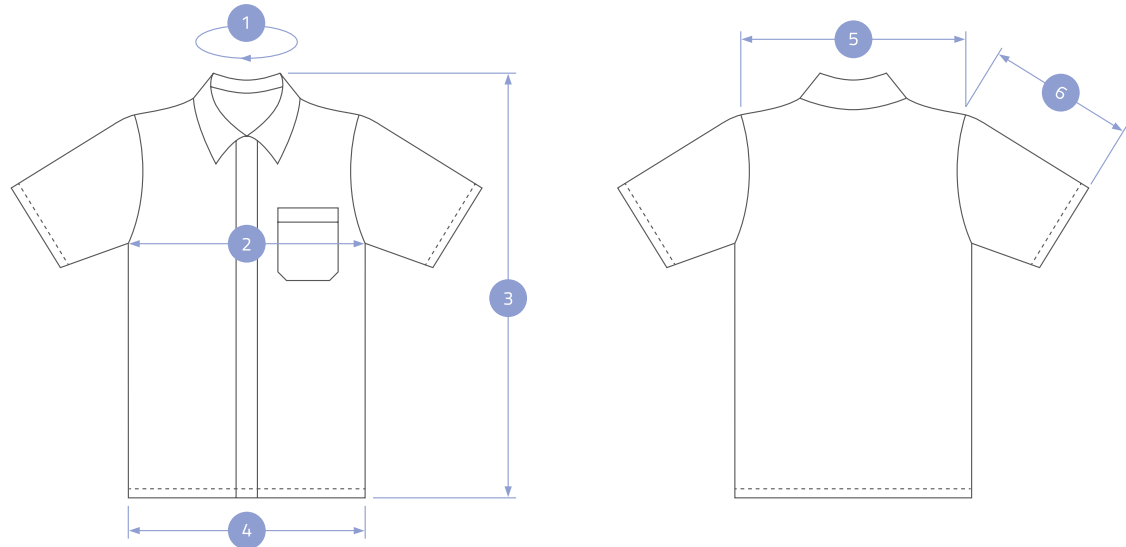
# SHORT SLEEVE SHIRT

## DESCRIPTION

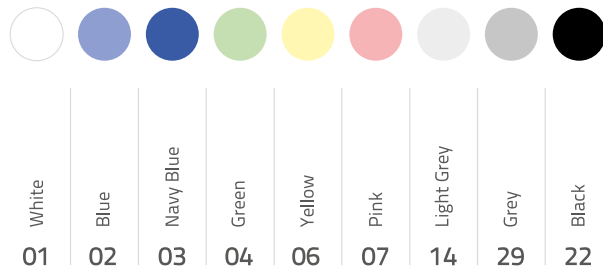
Fabric	FABRIC 065
Cut	UNISEX
Sizes	2XS - 2XL
Fastener	COVERED METAL SNAPS
Sleeves	FINISHED WITH HEM
Pockets	ONE ON THE LEFT BREAST
ESD sign	ON THE POCKET

## OPTIONS

Custom size	BESPOKE
Custom colour	BESPOKE
Customer's logo	EMBROIDERY / OVERPRINT



## STANDARD COLORS | FABRIC 065



	2XS	XS	S	M	L	XL	2XL
BODY							
1	40	40	42	42	44	44	44
2	52	55	58	61	65	67	69
3	64	66	68	68	72	76	76
4	52	55	58	61	65	67	69
5	45	46	47	48	49	50	52
SLEEVES							
6	25	26	26	28	28	28	30

Dimensions in centimeters

**34,8 %**

COTTON

**64,3 %**

POLYESTER

**0,9 %**

CARBON  
FIBER

Product Code:  
**CE-KASAK.065**



RESISTANCE IN ACCORDANCE  
WITH STANDARD

**PN-EN 61340-5-1**



WEIGHT

**160 g/m<sup>2</sup>**



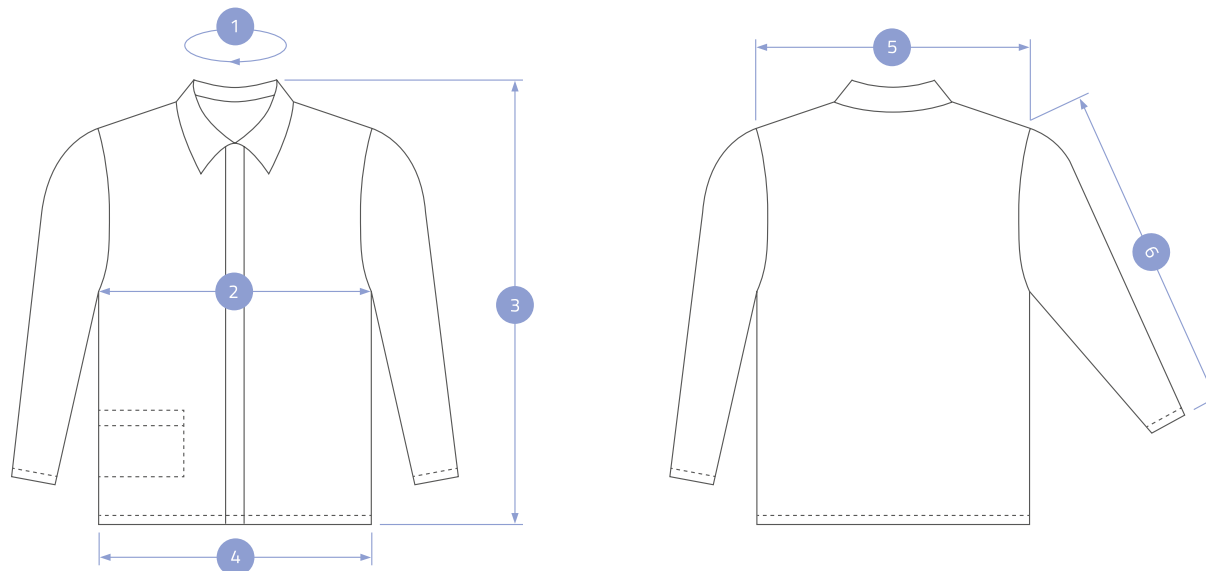
# CASAQUE TYPE COAT

## DESCRIPTION

Fabric	TKANINA 065
Cut	UNISEX
Sizes	2XS - 2XL
Fastener	COVERED METAL SNAPS
Sleeves	FINISHED WITH ELASTIC HEM
Pocket	INTERNAL, ONE ON THE RIGHT SIDE
ESD sign	ON THE LEFT SLEEVE

## OPTIONS

Custom size	BESPOKE
Custom colour	BESPOKE
Customer's logo	EMBROIDERY / OVERPRINT



## STANDARD COLORS | FABRIC 065



White	Blue	Navy Blue	Green	Yellow	Pink	Light Grey	Grey	Black
01	02	03	04	06	07	14	29	22

	2XS	XS	S	M	L	XL	2XL
BODY							
1	44	45	46	47	48	49	50
2	54	57	60	63	66	68	70
3	70	72	74	76	78	80	82
4	54	57	60	63	66	68	70
5	44	45	46	47	48	49	50
SLEEVES							
6	60	60	62	64	66	68	68

Dimensions in centimeters

34,8 %

COTTON

64,3 %

POLYESTER

0,9 %

CARBON  
FIBER

Product Code:  
CE-SPODN.065-DAM



RESISTANCE IN ACCORDANCE  
WITH STANDARD

PN-EN 61340-5-1



WEIGHT

160 g/m<sup>2</sup>



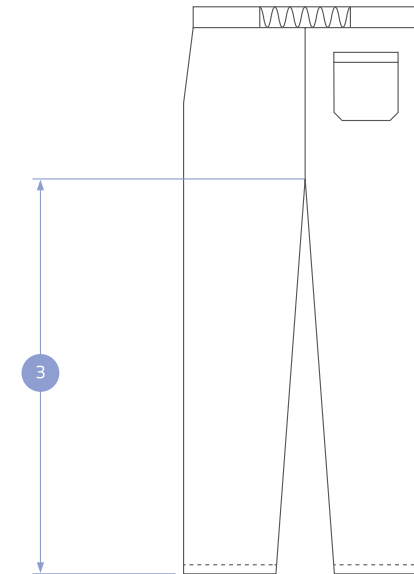
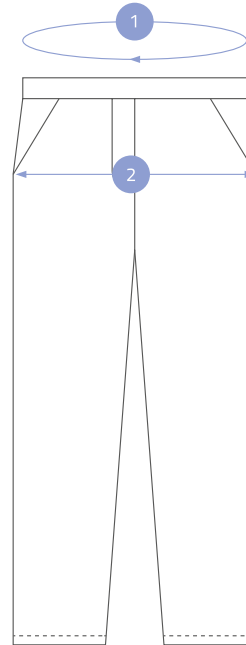
# LADIES TROUSERS

## DESCRIPTION

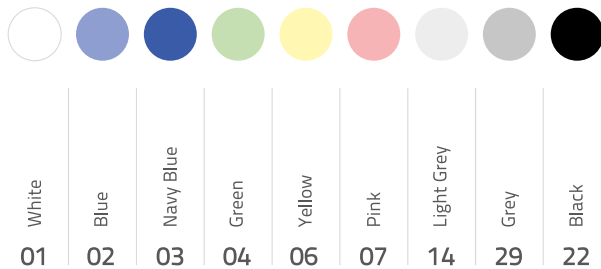
Fabric	FABRIC 065
Cut	FEMALE
Sizes	36 - 48
Fastener	ZIPPER
Pockets	TWO SIDE POCKET ONE ON THE BACKSIDE
Legs	FINISHED WITH HEM
ESD sign	SIDE TAG

## OPTIONS

Custom size	BESPOKE
Custom colour	BESPOKE
Customer's logo	EMBROIDERY / OVERPRINT



## STANDARD COLORS | FABRIC 065



	36	38	40	42	44	46	48
1	68 - 72	72 - 76	76 - 80	80 - 84	84 - 88	88 - 92	92 - 96
2	45	47	49	51	53	55	58
3	72	72	73	73	74	74	75

Dimensions in centimeters

**34,8 %**

COTTON

**64,3 %**

POLYESTER

**0,9 %**

CARBON  
FIBER

Product Code:  
**CE-SPODN.065-MES**



RESISTANCE IN ACCORDANCE  
WITH STANDARD

**PN-EN 61340-5-1**



WEIGHT

**160 g/m<sup>2</sup>**





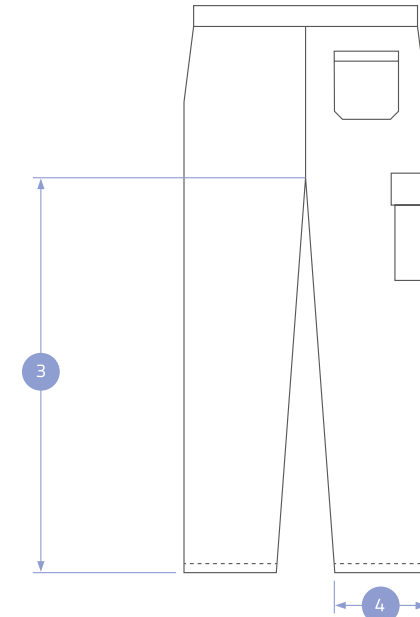
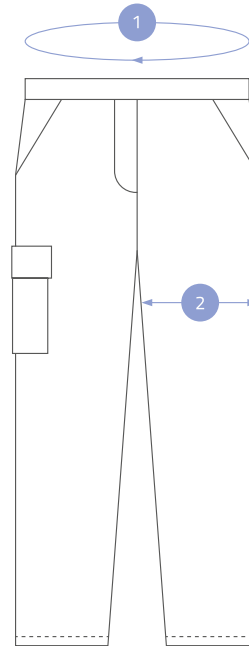
# MEN'S TROUSERS

## DESCRIPTION

Fabric	FABRIC 065
Cut	MALE
Sizes	44 - 60
Fastener	ZIPPER
Pockets	TWO SIDE POCKET ONE ONE THE BACKSIDE ONE ON THE RIGHT THIGH
Legs	FINISHED WITH HEM
ESD sign	SIDE TAG

## OPTIONS

Custom size	BESPOKE
Custom colour	BESPOKE
Customer's logo	EMBROIDERY / OVERPRINT



## STANDARD COLORS | FABRIC 065



White	Blue	Navy Blue	Green	Light Grey	Grey	Black
01	02	03	04	14	29	22

	44	46	48	50	52	54	56	58	60
1	78	82	86	90	94	98	102	106	110
2	28	30	31	32	33	34	35	36	37
3	82	82	82	82	82	82	84	84	84
4	21	22	23	24	25	26	27	28	29

Dimensions in centimeters

99 %

POLYESTER

1 %

CARBON  
FIBER

Product Code:  
CE-FARTU.099



RESISTANCE IN ACCORDANCE  
WITH STANDARD

**PN-EN 61340-5-1**



WEIGHT

**110 g/m<sup>2</sup>**



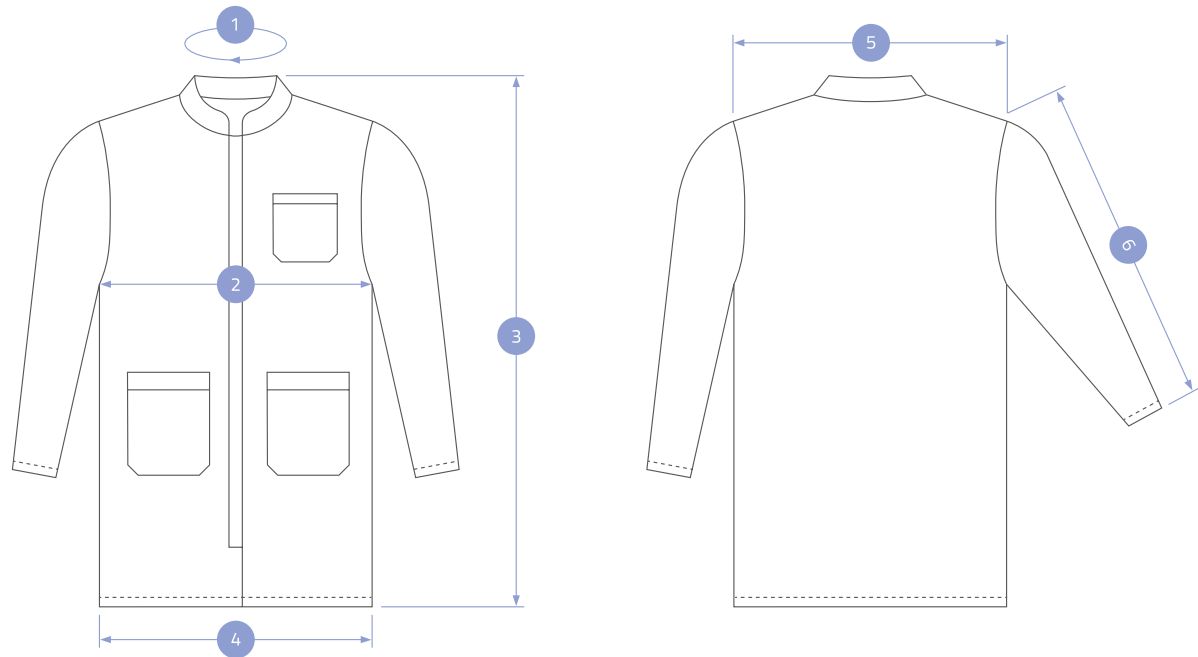
# CLEAN ROOM STANDARD COAT

## DESCRIPTION

Fabric	FABRIC 099
Cut	UNISEX
Sizes	2XS - 2XL
Fastener	COVERED METAL SNAPS
Sleeves	FINISHED WITH ELASTIC HEM
Pockets	ONE ON THE LEFT BREAST TWO ON THE BOTTOM
ESD sign	INTERNAL TAG

## OPTIONS

Custom size	BESPOKE
Custom colour	BESPOKE
Customer's logo	EMBROIDERY / OVERPRINT
Fastener	COVERED ZIPPER
Sleeves	RIB CUFF



## STANDARD COLORS | FABRIC 099



White	Light Grey	Grey	Navy Blue	Maroon	Blue	Dark Green	Turquoise	Orange
08	09	36	10	12	15	16	18	32

	2XS	XS	S	M	L	XL	2XL
BODY							
1	44	45	46	47	48	49	50
2	55	57	60	63	65	67	69
3	90	95	100	105	110	115	120
4	55	57	60	63	65	67	69
5	45	46	47	48	49	50	51
SLEEVES							
6	58	58	60	62	64	64	66

Dimensions in centimeters

99 %

POLYESTER

1 %

CARBON  
FIBER

Product Code:

CE-FARTU.099-KAP



RESISTANCE IN ACCORDANCE  
WITH STANDARD

**PN-EN 61340-5-1**



WEIGHT

**110 g/m<sup>2</sup>**



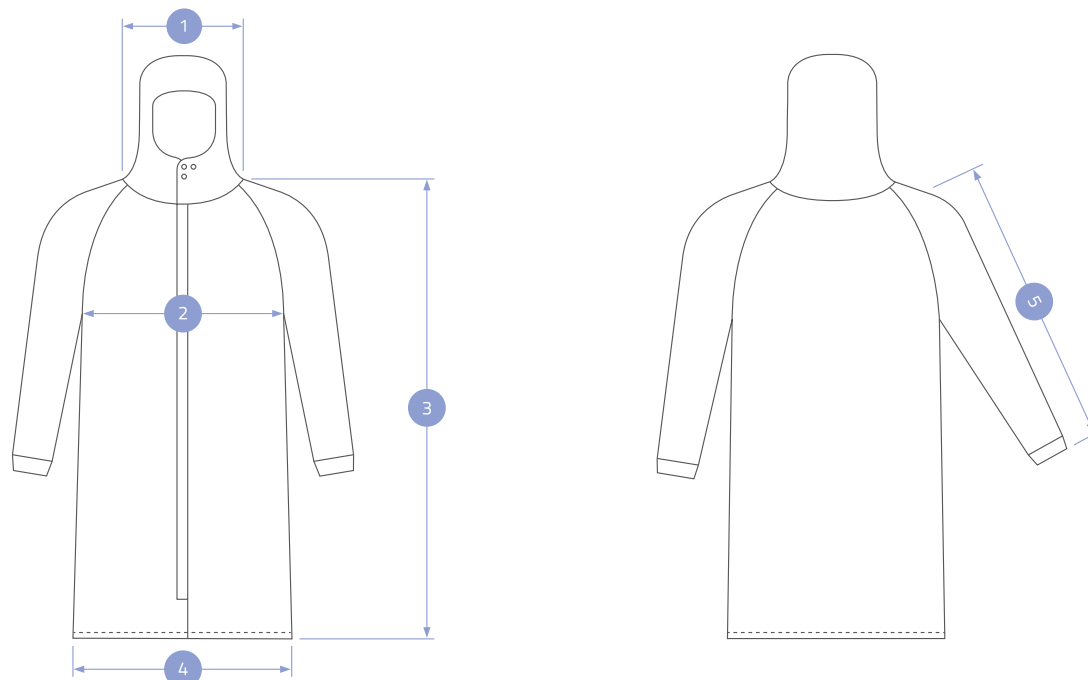
# CLEANROOM COAT WITH INTEGRATED HOOD

## DESCRIPTION

Fabric	FABRIC 099
Cut	UNISEX
Sizes	2XS - 2XL
Fastener	COVERED ZIPPER
Sleeves	RIB CUFF
ESD sign	INTERNAL TAG

## OPTIONS

Custom size	BESPOKE
Custom colour	BESPOKE
Customer's logo	EMBROIDERY / OVERPRINT



## STANDARD COLORS | FABRIC 099



White	Light Grey	Grey	Navy Blue	Maroon	Blue	Dark Green	Turquoise	Orange
08	09	36	10	12	15	16	18	32

	2XS	XS	S	M	L	XL	2XL
BODY							
1	18	18	18	18	18	18	18
2	54	58	62	66	70	74	78
3	102	103	104	105	106	107	108
4	56	60	64	68	70	74	78
SLEEVES							
5	79	80	80,5	81,5	82,5	83,5	85

Dimensions in centimeters

99 %

POLYESTER

1 %

CARBON  
FIBER



ESD

RESISTANCE IN ACCORDANCE  
WITH STANDARD

PN-EN 61340-5-1



WEIGHT

110 g/m<sup>2</sup>

Product Code:  
CE-KOMBI.099



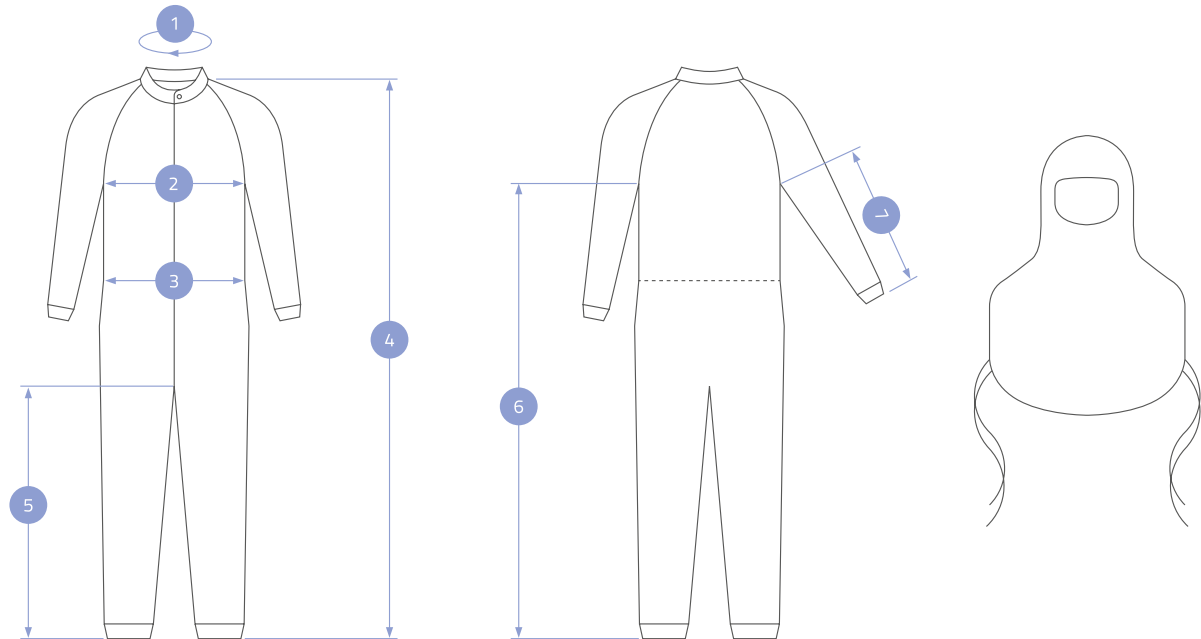
# CLEAN ROOM COVERALL

## DESCRIPTION

Fabric	FABRIC 099
Cut	UNISEX
Sizes	2XS - 2XL
Fastener	ZIPPER
Sleeves	FINISHED WITH ELASTIC HEM
Legs	FINISHED WITH ELASTIC HEM
Waist	ADJUSTABLE
Hood	SEPARATED FROM THE COVERALL ADJUSTABLE, TIED UNDER THE ARMS
ESD sign	INTERNAL TAG

## OPTIONS

Custom size	BESPOKE
Custom colour	BESPOKE
Hood	INTEGRATED WITH THE COVERALL



## STANDARD COLORS | FABRIC 099


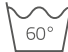
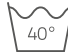
























White	Light Grey	Grey	Navy Blue	Maroon	Blue	Dark Green	Turquoise	Orange
08	09	36	10	12	15	16	18	32

	2XS	XS	S	M	L	XL	2XL
BODY							
1	47	47	48	51	52	53	54
2	51	55	59	63	67	71	75
3	42	46	50	54	58	62	66
4	164	165	166	169	171	173	175
5	77,5	78	78,5	80,5	81	82	81,5
6	132	133	134	136	137	137,5	138
SLEEVES							
7	60	61	62	63	64	64,5	65

Dimensions in centimeters

# WASHING INSTRUCTION REECO ESD CLOTHING

	FABRIC 065	FABRIC 099	KNIT FABRIC PIQUE	KNIT FABRIC 050	KNIT FABRIC 260
WASHING TEMPERATURE	 Wash at 60°C	 Wash at 60°C	 Wash at 40°C	 Wash at 40°C	 Wash at 40°C
BLEACHING	 Do not bleach	 Do not bleach	 Do not bleach	 Do not bleach	 Do not bleach
DRYING	 Tumble dry low temperature	 Tumble dry low temperature	 Tumble dry low temperature	 Tumble dry low temperature	 Tumble dry low temperature
IRONING	 Max sole-plate temp. of 150°C	 Max sole-plate temp. of 150°C	 Max sole-plate temp. of 120°C	 Max sole-plate temp. of 120°C	 Max sole-plate temp. of 120°C
DRY CLEANING	 Do not dry clean	 Do not dry clean	 Do not dry clean	 Do not dry clean	 Do not dry clean

ON THE EFFECTIVENESS OF ANTISTATIC PROTECTIVE CLOTHING MAY AFFECT THE WEAR, DAMAGE, LAUNDRY AND POSSIBLE CONTAMINATION, WE RECOMMEND WASHING CLOTHES IN CONTROLLED CONDITIONS.



**Reeco**.info

**HAHN+KOLB**  
GROUP

